

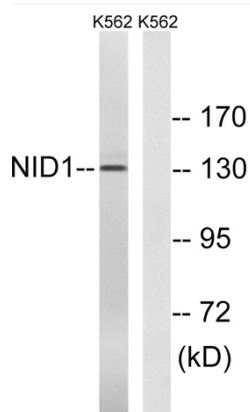


Nidogen Polyclonal Antibody

Catalog No	YP-Ab-17059
Isotype	IgG
Reactivity	Human;Mouse;Rat
Applications	WB;ELISA
Gene Name	NID1
Protein Name	Nidogen-1
Immunogen	The antiserum was produced against synthesized peptide derived from human NID1. AA range:219-268
Specificity	Nidogen Polyclonal Antibody detects endogenous levels of Nidogen protein.
Formulation	Liquid in PBS containing 50% glycerol, 0.5% BSA and 0.02% sodium azide.
Source	Polyclonal, Rabbit,IgG
Purification	The antibody was affinity-purified from rabbit antiserum by affinity-chromatography using epitope-specific immunogen.
Dilution	Western Blot: 1/500 - 1/2000. ELISA: 1/20000. Not yet tested in other applications.
Concentration	1 mg/ml
Purity	≥90%
Storage Stability	-20°C/1 year
Synonyms	NID1; NID; Nidogen-1; NID-1; Entactin
Observed Band	136kD
Cell Pathway	Secreted, extracellular space, extracellular matrix, basement membrane.
Tissue Specificity	Brain,Placenta,Testis,
Function	function:Sulfated glycoprotein widely distributed in basement membranes and tightly associated with laminin. Also binds to collagen IV and perlecan. It probably has a role in cell-extracellular matrix interactions.,PTM:N- and O-glycosylated.,similarity:Contains 1 NIDO domain.,similarity:Contains 1 nidogen G2 beta-barrel domain.,similarity:Contains 1 thyroglobulin type-1 domain.,similarity:Contains 4 LDL-receptor class B repeats.,similarity:Contains 6 EGF-like domains.,subunit:Interacts with FBLN1 and LGALS3BP.,
Background	nidogen 1(NID1) Homo sapiens This gene encodes a member of the nidogen family of basement membrane glycoproteins. The protein interacts with several other components of basement membranes, and may play a role in cell interactions with the extracellular matrix. [provided by RefSeq, Jul 2008],
matters needing attention	Avoid repeated freezing and thawing!

Usage suggestions

This product can be used in immunological reaction related experiments. For more information, please consult technical personnel.

Products Images

Western blot analysis of lysates from K562 cells, using NID1 Antibody. The lane on the right is blocked with the synthesized peptide.